

Preparation of Family Tree

(Portions of this exercise were borrowed from [Christian Healing Ministries](#), a healing prayer ministry)

A family tree is used to diagram family history so you can see where problems are in each generation. The graphical representation is very helpful.

- Start by asking God in prayer to reveal His truth to you in this exercise. Take time to listen to God as you work on this project.
- Begin at the bottom of the diagram; fill in your name and your spouse's name, too. Do the same with your children, your parents and your brothers and sisters.
- Go back as many generations as you can; even if you do not know their names. If possible, check with parents, grandparents and other relatives to get more details or clearer information.
- Use symbols to represent notable patterns of problems. Look at possible patterns or problem areas within the family bloodlines. Check through our list of possible problems below. God may give you an area that is not covered below, but it is essential to put down all areas revealed to you in order to break the patterns of generational sin.
- Be sure to list all sexual partners and/or soul-ties you have with another. This is extremely important. If your spirit is enjoined to another, you must be cut free from this relationship. Even if it was not sexual, but a long-term relationship, you may be tied spiritually, emotionally or mentally. This is an especially important step when you are married or planning to marry. Your marriage bed should only include you, your spouse and God. (see [prayers for cutting soul ties](#))
- Some problems come down vertically, such as from grandfather to father, some horizontally, from aunt to aunt, or cousin to cousin. Others may be even more specific, such as affecting the 1st born son or daughter in each generation.
- Some of the problems are obvious, others are known only to God. Don't worry about what you don't know. Jesus will reveal what you need to know, and what He reveals He will bring into healing.

Once you have completed the family tree, now you are ready to [pray for generational healing](#). As you do, remember to ask the Lord where the problems that surface had their beginning. Offer them ALL to God for healing.

Additionally,

- Commit your family to the Lord
- Pray for protection
- Seek ministry for personal issues
- Trust in the Lord and He will act!

What to Look for

Below are some of the common areas of generational bondage or sin that may help jog your memory and make a more complete picture of your family line.

Death

- Unusual or violent deaths
- Committed or attempted suicide
- Were murdered or died in tragic ways such as accidents, wars or violence
- Had an abortion or participated in/sponsored an abortion
- Had repeated miscarriages
- Died in a mental institution, nursing home or prison, especially those who felt lonely, unloved and/or abandoned
- Those who were unnaturally grieved
- Untimely deaths. This could include, for example, a pattern in the male line of a family dying at an early age.

Evidence of occult activity, demonic or oppressive spirits

- Superstitions
- Involvement in activities such as witchcraft, astrology, spiritualism, divination, magic, channeling of spirits, meditation, New Age or non-Christian religions of any sort
- Openings oneself to powers of the spiritual realm, such as pre-cognition or other psychic abilities
- Severe trauma, with evidence of effects passed on through the family (e.g., drowning, resulting in fear of water in other members, especially descendants)
- Made a blood covenant with Satan or involved in Satan worship
- Involved with a witch or other persons involved in the occult

Habitual patterns of sin

- Adultery / fornication
- Prostitution
- Homosexuality, lesbianism
- Incest
- Pornography (homosexual, heterosexual or child)
- Sexual perversions such as bestiality and pedophilia
- Fetishes

- Sexual promiscuity
- Lust
- Sexual addictions

Other besetting habitual sins:

- Violence
- Abuse (Physical, mental or emotional)
- Racial prejudice
- Anger
- Religious prejudice
- Murder
- Pride
- Greed
- Materialism
- Arrogance
- Hatred
- Unforgiveness or holding grudges

Destructive or abnormal patterns of relationships

- Addictions (alcoholism, nicotine, drugs, food, etc.)
- Divorces
- Abuse (Physical, mental or emotional)
- Hostility
- Control
- Manipulation
- Bondage (Domination)
- Revenge-seeking
- Unforgiveness
- Bitterness
- Anger
- Depression
- Any person considered an outcast, reject or black sheep

Diseases and/or predisposition to illness

- Arthritis
- Cancer
- Diabetes
- Depression
- Forgetfulness
- Headaches
- Heart trouble

- High blood pressure
- Manic-depressive disorders
- Mental retardation
- Mental disturbances
- Nervous breakdowns
- Respiratory trouble
- Skin problems
- Ulcers

Historical Family Connections

- Involvement with events of great sin, evil or trauma e.g., massacres, plagues, slavery, conquests, etc.
- Ethnic origin issues – negative traits, cultural evils, oppression, curses (e.g., European, Asian, African, Native American or Caribbean ancestry, etc.)

Religious History


- List all non-Judeo/Christian religions in the family (including atheism)

In-Utero Wounding


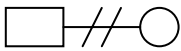
- A child conceived in lust or rape
- Illegitimacy
- Parent considering adoption or abandonment
- Ambivalence or rejection from either parent
- Fears/anxiety (ex: mother had difficulty carrying child to term)
- Attempted/failed abortion
- Loss of father
- Life-threatening illness of the mother
- Life-threatening illness of the baby
- If mother had miscarriage(s) or abortion before you were conceived


Family Tree

Key

Male 



Female 

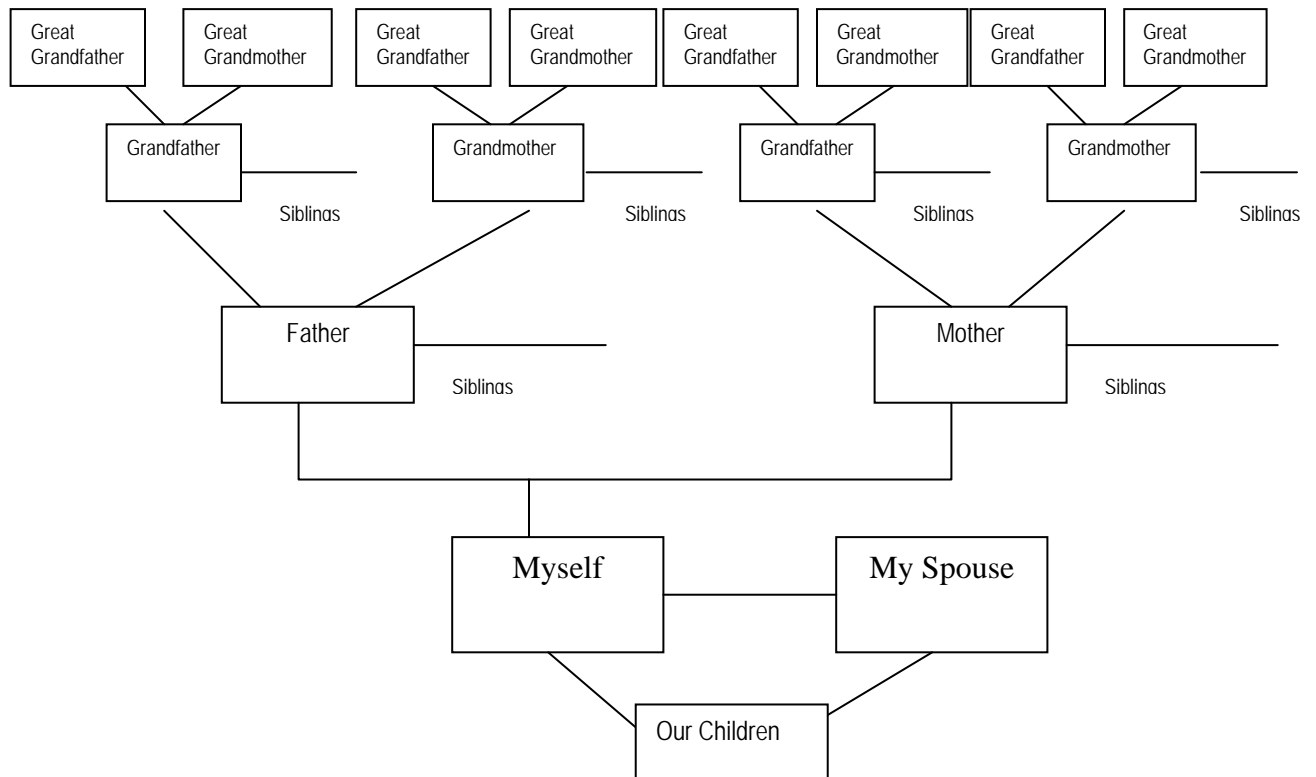
Married  Divorced 

Never Married  

Deceased   Violent/Accidental Death  

Infant Death/Miscarriage/Stillborn/Aborted 

- | | | | |
|----|--------------------|---|----------------------------|
| SU | Suicide | PI | Physical illness |
| SA | Sexual Abuse | MI | Mental Illness |
| PA | Physical Abuse |  | Satanic/Occult Involvement |
| AB | Addictive Behavior |  | Anxiety/Fear |
| AA | Substance abuse | UG | Unresolved Grief |
| U^ | Unforgiveness | | |



If this study has helped you, please consider making a contribution to support our ministry. We offer all of our materials for free and your contribution would help us meet our expenses. Please visit <http://www.porn-free.org/donations.htm> to donate. Thank You!